



Your Signature Address
in Cox's Bazar, Where
the Horizon Meets Elegance.

**Experience
the Icon of Sugandha:**

Redefining Hospitality with
an Unmatched Ocean View.





BAY ICON

BAY ICON

BAY ICON

BAY ICON

Shugandha, Cox's Bazar

Welcome to Bay Icon -

Shugandha, Cox's Bazar

Prime Location with Scenic Views
Bay Icon is a luxury 5-star hotel situated along the world's longest sea beach. With breathtaking views of the ocean and exclusive access to the pristine beauty of Sugandha Point, the property promises unparalleled elegance and comfort. Located in the heart of Cox's Bazar, it occupies 150 decimal of government-allotted land, making it an exceptional investment in a highly sought-after location.



At A Glance

Project Name
BAY ICON SUGONDHA

Project Type
Five star Standard Hotel with exclusive Shopping & Entertainment facilities of Cox's Bazar, Bangladesh.

Land Area
150
Decimal land situated.

Location
Situated most Closest to the beach in Sugandha Point Sea Beach at the heart of Cox's Bazar. Plot No # 03 & 04. Road # 01, Cox's Bazar, Bangladesh

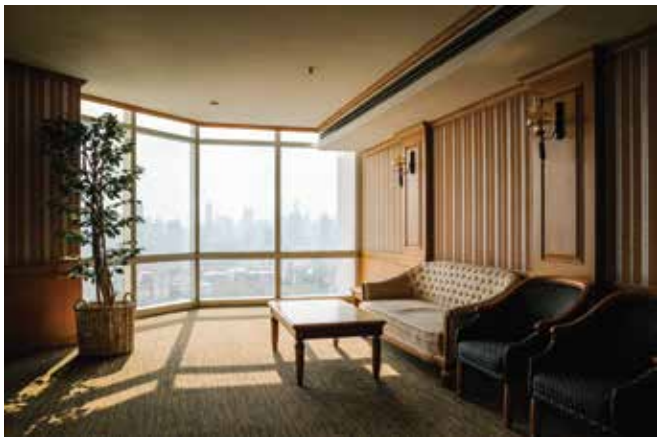


Room & Suites

Accommodations & Business

2 Presidential Suites, 11 Executive Inter-Connecting Family Suites, 55 Premier Deluxe, 82 Superior Twin, 24-Hour Room Service, Laundry Service, Executive Lounge, Business Center, Event Hall, Seminar Hall, Conference Meeting Room, Ball Rooms, Rooftop Party Hall.





Culinary Delights at Bay Icon

Embark on a global gastronomic journey at Bay Icon. From the refined elegance of Bay Continental to the exotic flavors of our Thai, Japanese, Chinese, Indian, and Bengali specialty restaurants, we cater to every craving. Enjoy a breezy Rooftop BBQ or a quiet moment at our Lobby Cafe Lounge.

We also host an elite collection of world-class brands including KFC, Pizza Hut, Chatime, Gelatissimo, Tarka, and Mat. Whether it's fine dining or a quick favorite, Bay Icon is the ultimate food destination at Sugondha Beach.



Hotel Facilities & Other Entertainment



Entertainment & Adventure at Bay Icon

Every moment at Bay Icon is a perfect blend of thrill and relaxation. Immerse yourself in the magic of cinema at our exclusive Cineplex or unwind in style at our elite Shisha Lounge Bar. To keep your mind and body rejuvenated, we offer a modern Gym,

a premium Spa, and exclusive Barber Facilities. For those who love the water, our Infinity Rooftop Pool and Splash Pool provide the ultimate escape with breathtaking views. Indoor entertainment is always at hand with Billiards, Table Tennis, and

Table Soccer. For the ultimate adrenaline rush, adventure seekers can take advantage of our thrilling outdoor lineup, including Dune Buggies, Electric Bikes/Cycles, Jet Skiing, Parasailing, and Water Surfing.

Hotel Facilities & Other Entertainment



Retail, Kids & Utilities at Bay Icon

At Bay Icon, we provide a complete lifestyle experience with everything you need under one roof. Our premium retail wing features a Souvenir Shop, Jewelry Shop, Sports Shop, Mobile Shop, and an exclusive Clothing Store, alongside an elegant Art Gallery for art enthusiasts. For your daily essentials and peace of mind, we offer a Convenient Store, Pharmacy, Agent Banking, Money Exchange, and a fully equipped Medical Center. Families can relax knowing their children are entertained at our Child Day Care and high-energy Play Zone, which includes Indoor Rides, Motion Games, Sports Games, and a fun Water Splash area. To make your stay even more seamless, our guest services include Rent a Car, Ticketing, and curated Sightseeing Packages to explore the best of Cox's Bazar.

Exquisite Rooms & Suites

Experience the pinnacle of comfort at Bay Icon, where every room is a sanctuary designed with elegance and modern sophistication. Whether you choose a view of the majestic hills or the endless turquoise waters of the Bay of Bengal, your stay is guaranteed to be unforgettable.



1st Floor Room Type (Room Nos-9)

■ Type 4 (387sft) = 7 No.
Room = 272 sft
Toilet = 50 sft
Balcony = 65 sft

■ Type 12 (516sft) = 1 No.
Room = 381 sft
Toilet = 47 sft
Balcony = 88 sft

■ Type 13 (350sft) = 1 No.
Room = 239 sft
Toilet = 45 sft
Balcony = 66 sft

2nd Floor Room Type (Room Nos-32)

■ Type 1 (620sft) = 1 No.
Room = 433 sft
Toilet = 98 sft
Balcony = 89 sft

■ Type 2 (479sft) = 1 No.
Room = 305 sft
Toilet = 79 sft
Balcony = 95 sft

■ Type 3 (390sft) = 5 No.
Room = 289 sft
Toilet = 50 sft
Balcony = 51 sft

■ Type 4 (390sft) = 13 No.
Room = 272 sft
Toilet = 50 sft
Balcony = 65 sft